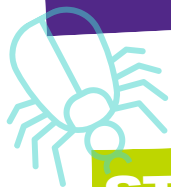


INSECT SPECTACULAR

JUNE 21-22, 2024

STERNBERG MUSEUM, HAYS, KS



Who should register:

All 4-H members enrolled in entomology or interested in study of insects! At least one parent/adult guardian from each family must register and attend with children. All levels of experience are encouraged to attend, from beginning to advanced. This is a fun event, designed to encourage curiosity and the sharing of knowledge, learn about collecting, storing, identifying, and pinning your insects for exhibit.

Cost:

4-H members and at least one adult must pay a \$75 registration fee, which includes Friday supper, lunch and snack on Saturday, bottled water, class materials, t-shirt and handouts. Younger siblings under 4-H age, second parent, etc. that may be coming along, but not participating in the classes will need to pay a fee of \$35.00. This will pay for the meals and snack Saturday, but does not include program materials or shirt.

Registration

To register, visit:

https://kstate.qualtrics.com/jfe/form/SV_3KsBcljnc0vYZU

Registration closes May 30th

You may choose to add on the following to your registration:

- Insects of Kansas book, \$5.00 each
- additional t-shirts, \$20 each



Attire & What to Bring:

Participants need to wear comfortable clothes and shoes – no sandals or flip-flops please. If you wear shorts, please bring long pants for the collection and photo trips.

- Friday sack lunch
- Lawn chair
- Insect/tick repellent
- Sunscreen
- Collecting & pinning supplies (nets, killing jar, etc.)
- Lots of specimen containers
- Camera for the photography collection class
- Laptop or tablet for the identification class
- Insects or insect pictures you need help identifying



Hotel & Lodging:

<https://www.visithays.com/111/Lodging>

Accessibility Accommodations:

K-State Research and Extension is committed to providing equal opportunity for participation in all programs, services and activities. Accommodations for persons with disabilities may be requested by contacting Amy Sollock two weeks prior to the start of the event (June 1) at asollock@ksu.edu or 785-259-2256. Requests received after this date will be honored when it is feasible to do so.

Kansas State University Agricultural Experiment Station and Cooperative Extension Service.

K-State Research and Extension is an equal opportunity provider and employer.

K-STATE
Research and Extension

